



Operating Instructions

Transrotor

ZET 1 & ZET 3



RÄKE HIFI/VERTRIEB GMBH, IRLNFELDER WEG 43, D-51467 BERG. GLADBACH
Telefon 02202/31046, Telefax 02202/36844

Transrotor turntables are masterpieces of fine mechanics, an expression of a consequent sense of craftsmanship.

Transrotor's goal is to build a device for the customer, which sounds excellent, can be operated comfortably and logically, is made from the best materials, works for decades and makes easy repair service possible.

Included in delivery (standard)

Before you begin the system setup, please check if the delivery is complete.

- Turntable-chassis incl. mounted base and main bearing
- Motor
- Power supply
- 3 Aluminium spike coasters
- Belt
- Platter, acryl-carbon platter mat, platter weight aluminium
- One pair of cotton gloves
- Bag with tonearm accessories and instruction manual, cartridge accessories (if ordered with tonearm and cartridge)

Setup

Start with the setup at the final position of the turntable, because afterwards you can no longer transport it.

To avoid fingerprints on the acrylic glass and the polished surfaces, please put on the gloves provided.

1. Place the three coasters in a triangular arrangement (two in the front, one in the back) on your table or rack.



2. Place your chassis with the spikes into the recesses of the coaster.

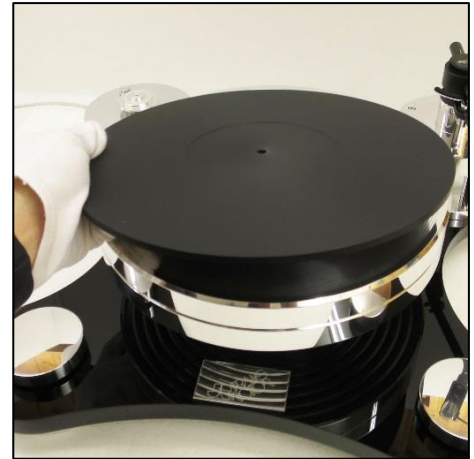


3. The height and the alignment of the chassis can be adjusted directly by turning the three aluminium buttons.

4. Place the motor precisely on the rear left corner of the chassis.



5. Take the platter out of the packaging and put it on the bearing. After that put on the platter mat.



6. Now place the drive belt around platter and motor pulley



**Upper groove
(small diameter)**

= 33 1/3rpm

Lower groove (larger diameter) = 45rpm

If a Konstant power supply has been ordered, a motor pulley with only one groove is installed.

It's no longer necessary to change the belt.

The drive speed is now changed directly on the power supply.



7. Plug the connector cable of the motor into the power supply and connect the power supply to the mains. Usually the power supply can stay plugged in because the consumption is very low if the motor is turned off.

You should only remove the power supply from the mains if it is not used for a longer period of time.

8. Connect the NF cable with the two RCA plugs to the phono input of your amplifier:

red = right channel
black = left channel

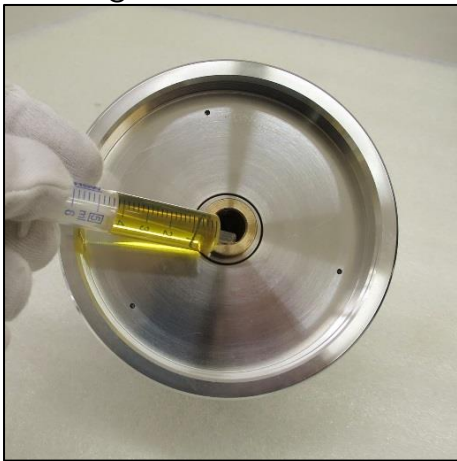
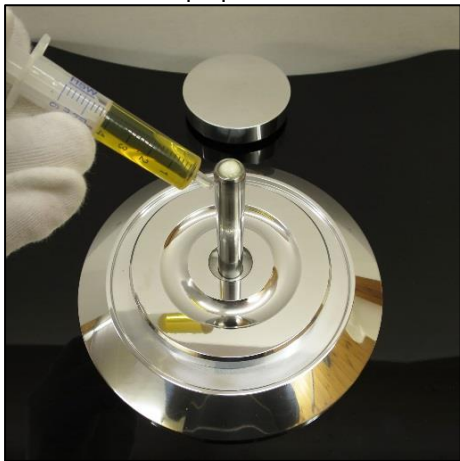


9. For tonearm adjustment please refer to the separate operating instructions of the tonearm.

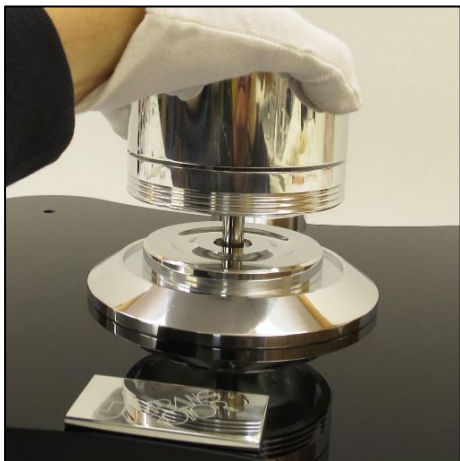
10. For data and regulations of the cartridge please refer to the separate instructions.

Turntable with TMD-Bearing

Carefully pull of the entire top part of the TMD bearing and let about 3cc bearing oil flow over the ceramic ball and the axle. Inject the remaining oil into the socket of the upper part of the bearing.



Now you can place the upper part precisely over the axle and let it slide down slowly. Place the motor on the left side of the chassis and make sure to have a 5mm gap between motor and



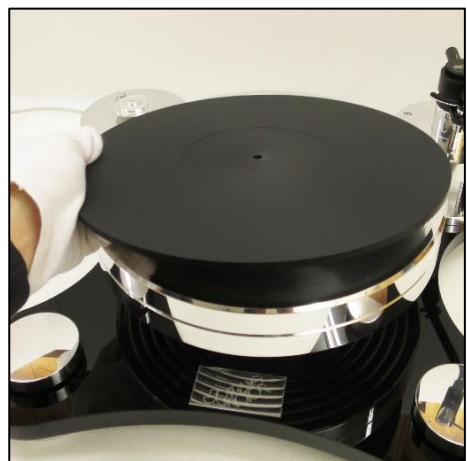
chassis.

If you have the Zet 3 model the motor is placed on a motor stand.

Place the drive belt over the engine pulley and the belt groove on the TMD bearing.

The belt should run parallel to the surface. To achieve this use one of the three belt grooves.

Take the platter out of the packaging and put it on the bearing. After that put on the platter mat.



Operation

Always switch off the motor before you put on or remove a record.

Listening to a record:

1. Place the record on the platter.
2. If you have a platterweight, place it on the spindle. This way even slightly wavy records are played back accurately and in the highest quality.
3. Move the tonearm over the inlet groove of the record and lower it with the lift lever.

Particularities:

- **Regular model**

Every 12 months check if the bearing axis has still an oil film on it.

Experience has shown that a drop of synthetic special ZF oil (available as a spare part) is sufficient in these intervals.

- **Turntable with TMD-bearing**

Check the oil reservoir once a year, if contamination is visible, the oil should be replaced. The 122 oil is available as a spare part and comes with a detailed instruction.

Only use original Transrotor oil!

Accessories

An **additional tonearm** can be mounted on the rear left corner of the chassis.

For this purpose, the motor is placed to the left next to the chassis. The motor coaster required for this is available separately.



The device can also be equipped with a **second motor**. In this case one long belt runs the platter.

A Konstant M2 Ref. power supply is now required.

If you have a TMD-bearing two short belts directly driving the bearing itself.





Special **dust covers** are available for all devices and can be customized by us to your preferences.



An **additional base plate**, which we recommend when using two motors is also available.



A useful accessory is the "Design" **cleaning brush**. It keeps the stylus free of dust fluff.



If the space next to the platter is occupied by a motor, there is a special stand for the chassis assembly.



The **Konstant M1 power supply** stabilizes the musical stage and improves locability. There is no need to change the belt to the 45rpm motor pulley anymore because the speed is switched at the

power supply.
In addition, all speeds can be fine-tuned.



A specialised **Zet-rack** is also available.
It can be equipped with columns of different heights to accommodate the power supply and preamplifier.



You can upgrade your existing device with the **TMD kit**, detailed instructions are included.

Care instructions

Your Transrotor turntable is made of the best materials. All parts are robust and easy to maintain and designed for years of use. If you want to keep your device in mint condition, please note the following instructions.

Dust cover, chassis and platter

Always use a damp leather for normal cleaning and **never use a dry cloth**, otherwise the surface will become increasingly scratched.

You can achieve the best results with a cleaning fluid called LASER CLEAN and a lint-free soft cloth. Furthermore, the cleaned parts are largely freed of static electricity.

Oil or grease strains can easily be removed with mineral spirits.

Aluminium and metal parts

Oil and grease strains can be removed with mineral spirits. Slight scratches can be removed with a special aluminium polish.

Please do not use other polishing and cleaning agents.

Please do not use metal polish on the platter.

A care series consisting of:

- Aluminium polish set
- Acrylic polish set
- Acrylic cleaning set
- Gloves

This care series can be ordered via our service telephone or through specialist retailers.

Specifications

ZET 1**Dimensions (WxDxH):**

45,5cm x 40cm x 20,5cm

Weight:

Approx. 24 Kg

ZET 3**Dimensions (WxDxH):**

45,5cm x 40cm x 23cm

Weight:

Approx. 34 Kg

If you have any questions about your turntable, or need accessories and spare parts, ask your special dealer – or simply give us a call.

Service phone: Monday to Thursday from 3 p.m. to 4 p.m.

Tel.: +49 02202-31046

Technical changes and errors are expressly reserved.